



Assign test execution

How Bulk Assignment works

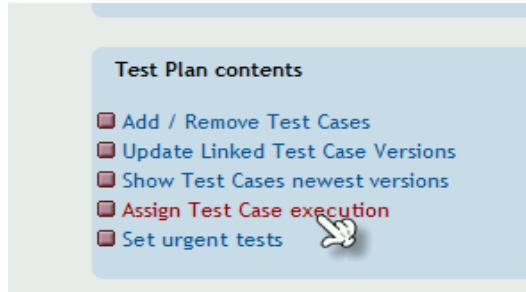
Date	Author	Notes
20081005	Francisco Mancardi	

Assign test execution.....	2
Bulk user assignment.....	4



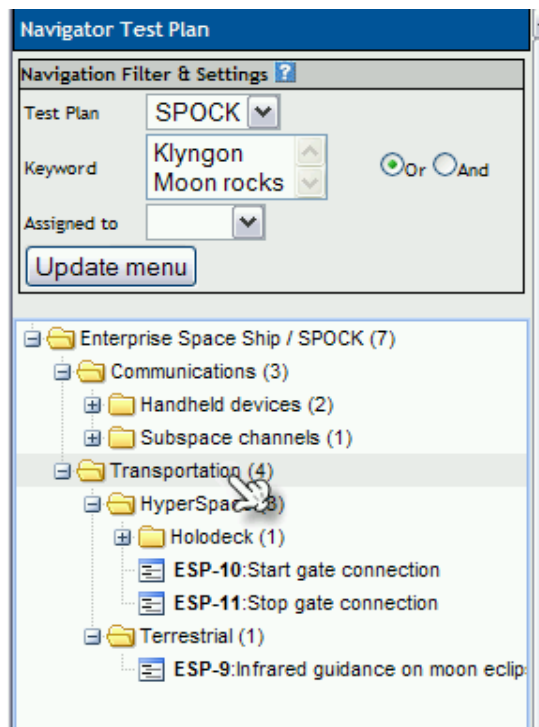
Assign test execution

Using following item on Test Link desktop:

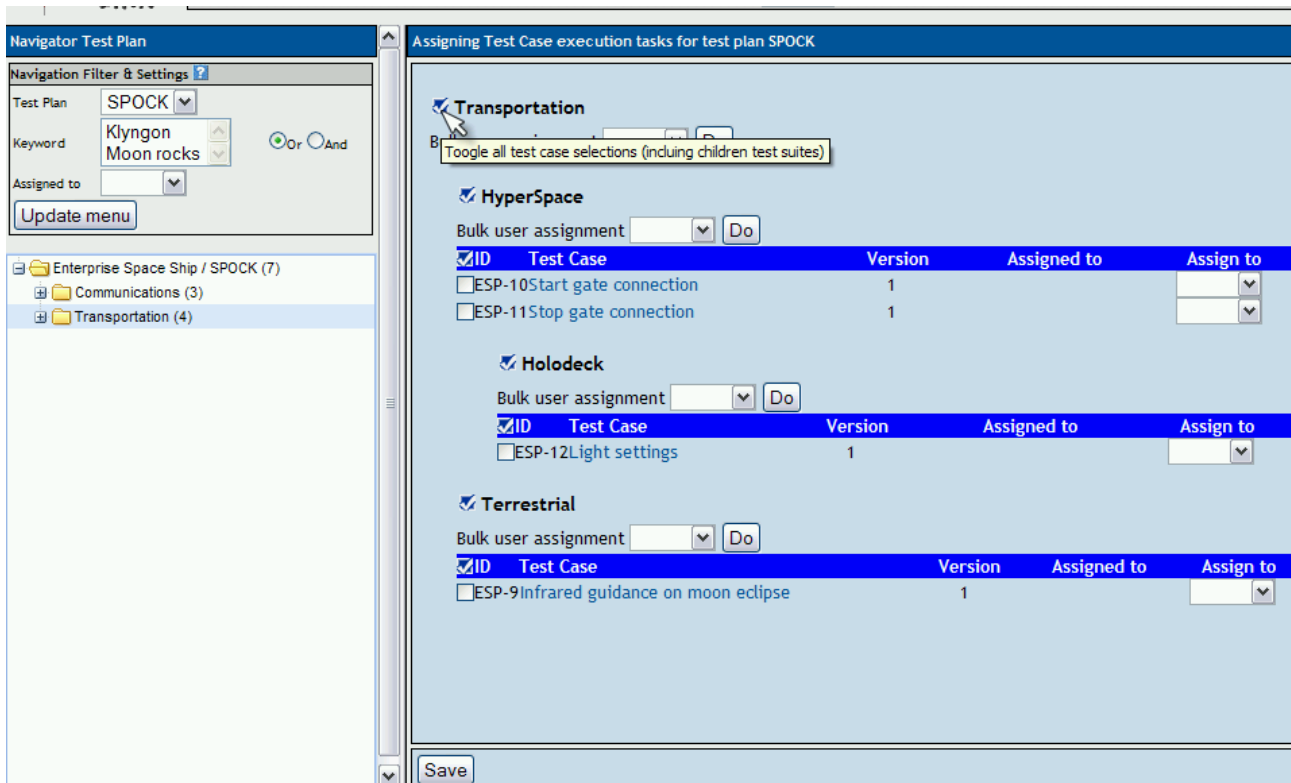


You can assign test case for execution to different users.

Using tree menu on left frame, you can choose a whole test suite, that will be displayed on detail on right frame.



In this example, clicking on Transportation will produce:



To assign a test case to an user, following steps must be followed:

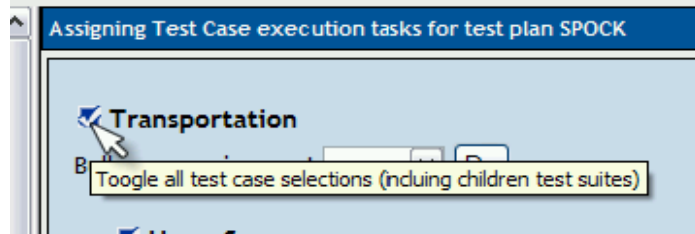
1. select test case, using check box on the left of test case ID.
2. choose user, using combo box place on column with label 'Assign to'.
3. Use 'Save' button to write selection on database

To simplify this task when you need to assign a whole test suite to an user, bulk user assignment feature has been developed.

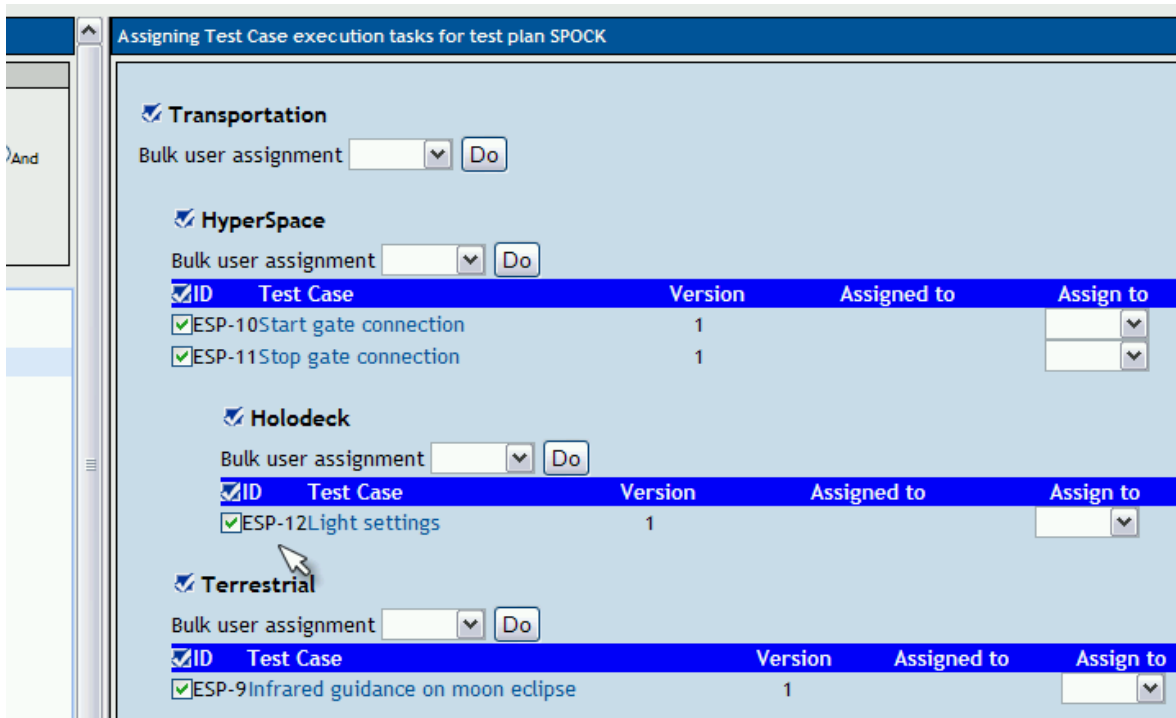


Bulk user assignment

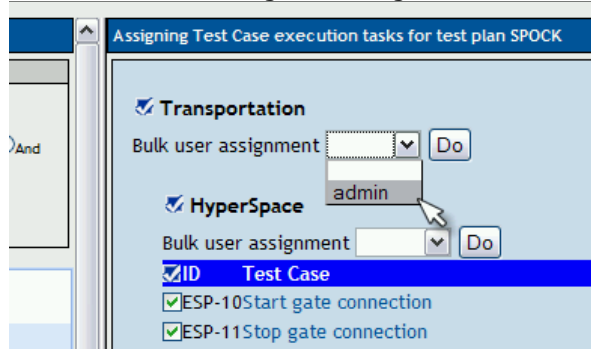
Bulk user assignment is not really different, that normal assignment. Using clickable images you can toggle state of multiple check boxes with one click. In the image displayed above, you can see following help, when you put cursor over image present on the left of test suite name.



Clicking on this image will result on all test cases present on "Transportation" test suite and it's children test suites, be selected as displayed on following image:

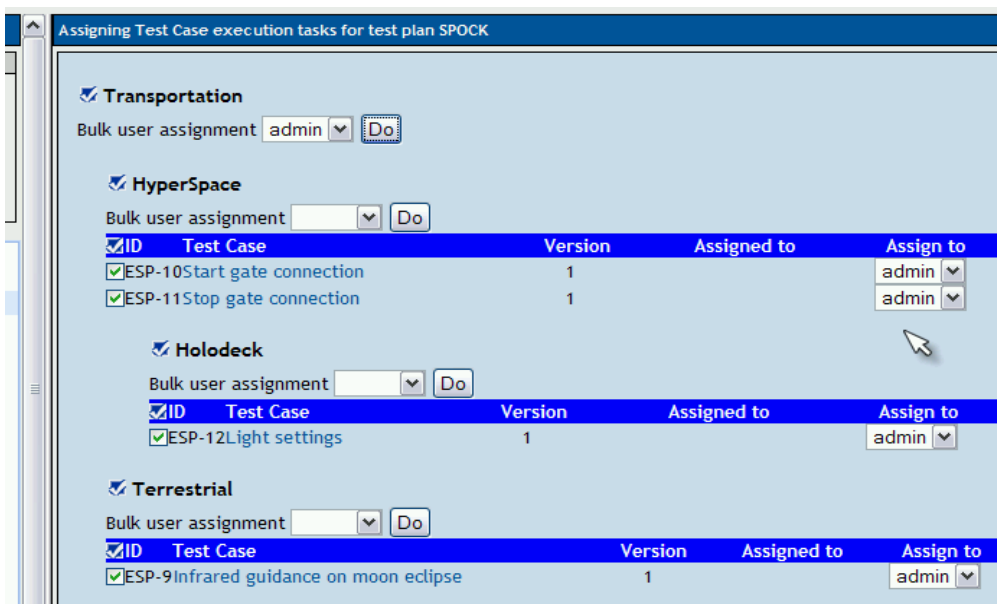
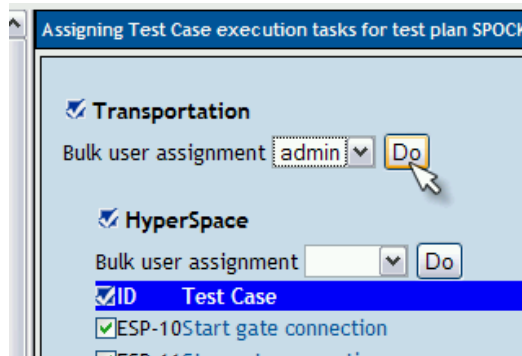


Next step is to choose user, this will be done using bulk assignment section under test suite name.

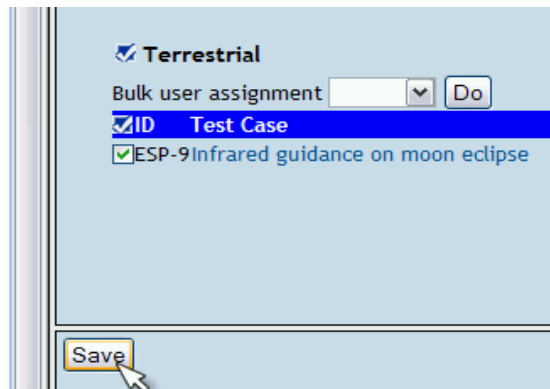




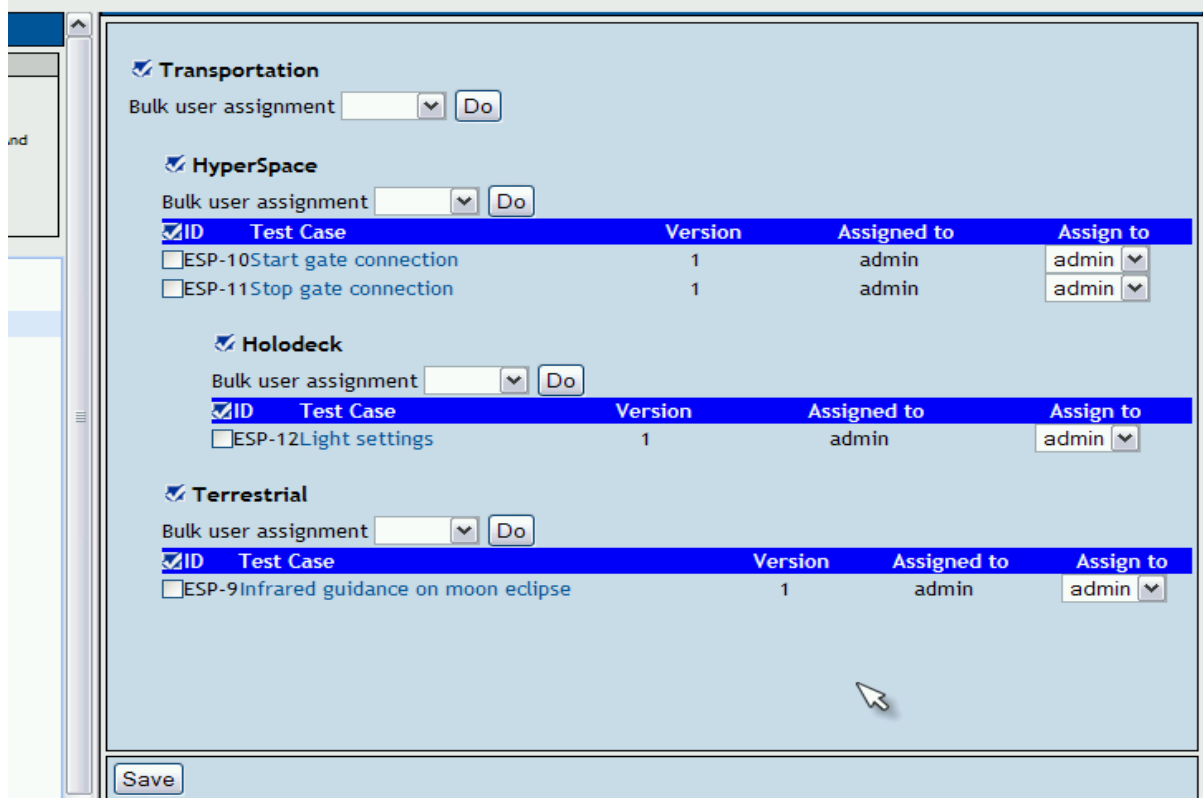
Then using 'Do' button, combo boxes of all checked check boxes will be setted to 'admin'.



Last step, to save this work is click on 'Save' button

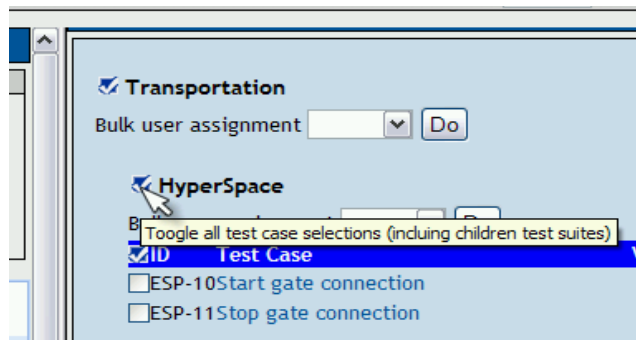


After screen refresh, you will see:



Bulk assignment, can be also done just on test cases belonging to a test suite without affecting children test suites.

As an example if you want to change assignment, only on test cases children of "HyperSpace" test suite, instead of using image on the left of test suite name:



You use icon present on the left of **ID** label:

